

# Partner with Purpose



## Corporate Engagement with Thrive Youth

---

Sponsorship, volunteering, and meaningful team experiences that create lasting youth impact

---



# TABLE OF CONTENTS

---

Why Partner with Thrive **1**

---

How to Engage with Thrive **2**

---

Sponsorship: Thrive Youth Anti-Gala **3**

---

Corporate Donations and Giving **4**

---

Employee Volunteering: Thrive Days **5**

---

Creativity Kit Packing and Supply Drives **6**

---

Team-Building Workshops **7**

---

# Why Partner with Thrive Youth



At Thrive Youth Development Canada, we believe every child deserves the opportunity to discover their voice, build confidence, and develop the leadership skills they need to thrive, regardless of their postal code or family income.

For nearly 30 years, Thrive has partnered with schools and community organizations to deliver free, arts-based leadership programs to children and youth in under-resourced communities across Canada. Our programs use creativity as a tool for building confidence, empathy, collaboration, and a sense of belonging, the foundational skills young people need to succeed in school, work, and life.

## THE ROLE OF CORPORATE PARTNERS

Corporate partners play a critical role in making this work possible. Through sponsorship, volunteering, and hands-on team engagement, corporate teams help bring Thrive programs to life while creating meaningful experiences for employees that align with values, purpose, and community impact.

**This guide outlines flexible ways for your organization to engage with Thrive, whether you're looking to:**

- **Invest in long-term youth impact**
- **Engage your employees in purpose-driven experiences**
- **Support communities where your teams live and work**

# How to Engage with Thrive

---

Thrive offers flexible engagement opportunities designed to align with your organization's goals, values, and capacity from hands-on volunteering to long-term strategic partnerships.

## Sponsorship: Thrive Youth Anti-Gala

A high-impact, annual event sponsorship opportunity offering brand visibility, employee engagement, and connection to Thrive's national community.



## Philanthropic Investment: Corporate Donations and Giving

Flexible corporate donations that directly support Thrive's arts-based leadership programs and youth impact across Canada.



## Employee Volunteering: Thrive Days

Purpose-driven volunteer experiences where corporate teams engage directly with Thrive youth in schools.



## Creativity Kit Packing and Supply Drives

Hands-on opportunities for teams to assemble school supply kits or organize supply drives that support Thrive's work in schools and communities.



## Team-Building Workshops

Facilitated, creativity-based workshops for corporate teams inspired by Thrive's approach, led by professional artists from Thrive's artist educator network



# Sponsorship: Thrive Youth Anti-Gala



Unlike a traditional gala, the Thrive Youth Anti-Gala replaces formal speeches and seated dinners with immersive, arts-based experiences, inviting guests to engage with creativity, community, and impact in a way that is participatory, unexpected, and memorable. We bring together over 500 corporate leaders, philanthropists, artists, and community champions in support of youth leadership and creativity.

## Why Sponsor the Anti-Gala

Brand visibility in a bold, creative, values-aligned environment.



Meaningful engagement with clients, employees, and corporate leaders.



Visibility with a nationally respected youth charity known for innovation and impact.



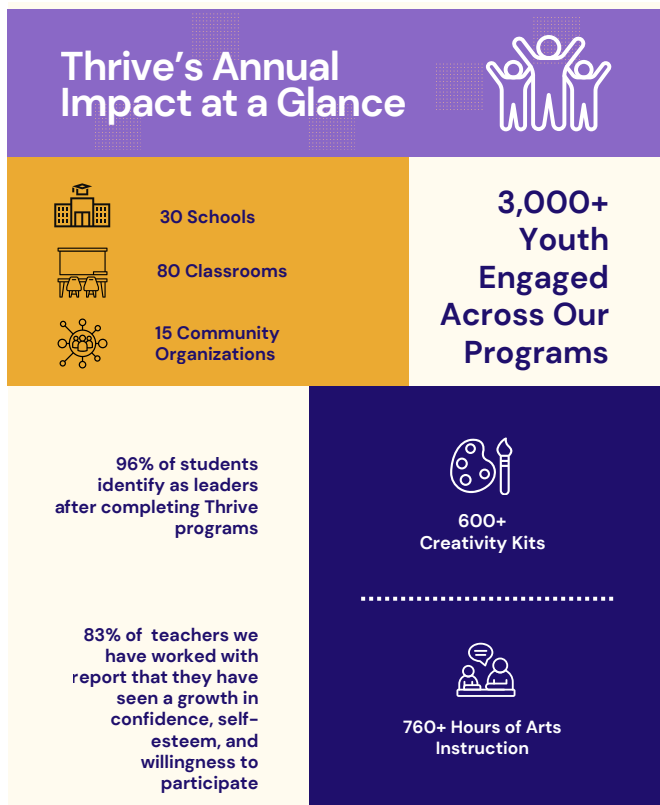
**The Anti-Gala is Thrive’s only sponsorship opportunity and is offered in limited quantities to ensure meaningful recognition and a high-quality experience for partners. The Anti-Gala is about participation, connection, and reimagining what community impact can look like.**

# Corporate Donations and Giving

## INVESTING IN YOUTH

Corporate donations to Thrive Youth Development Canada directly support the delivery and growth of our arts-based leadership programs for children and youth in under-resourced communities across Canada.

These philanthropic investments help ensure that young people have access to safe, inclusive spaces where they can build confidence, express themselves creatively, and develop the leadership skills they need to thrive regardless of their background or circumstances.



## WAYS TO GIVE

Corporate partners can support Thrive through:

- One-time or multi-year donations
- Unrestricted or program-designated giving
- Corporate foundation grants
- Employee giving or matching gift campaigns

## ACCOUNTABILITY AND IMPACT

Thrive is committed to transparency and meaningful impact reporting. Corporate donors receive updates that demonstrate how their investment supports youth leadership, creativity, and community connection.

**Philanthropic investment in Thrive Youth is an investment in the confidence, leadership, and future of young people across Canada.**

# Employee Volunteering: Thrive Days

## PURPOSE-DRIVEN EXPERIENCES FOR CORPORATE TEAMS

Thrive Days are facilitated volunteer experiences that bring corporate teams together for a full day of programming in a partner school with Thrive. Led by Thrive facilitators and professional artist-educators, Thrive Days are designed to be inclusive, engaging, and meaningful for both volunteers and young participants. **No prior experience is required. Thrive provides the structure, facilitation, and materials to ensure a positive and impactful experience for everyone involved.**



## WHAT A THRIVE DAY LOOKS LIKE

During a Thrive Day, corporate volunteers:

- Participate in activities alongside participants, cheering them on and encouraging creativity
- Support youth expression, confidence-building, and collaboration
- Work as a team in a welcoming, well-supported environment

## WHY TEAMS CHOOSE THRIVE DAYS

Organizations choose Thrive Days because they:

- Offer meaningful, hands-on employee engagement
- Support youth in local communities
- Align with values around equity, inclusion, and social impact
- Create shared experiences that strengthen team connection

# Creativity Kit Packing and Supply Drives

---

Thrive’s Creativity Kits provide children and youth with essential wellness and school supplies, items that many young people do not consistently have. For a child without basic essentials, even showing up at school can feel difficult. A Creativity Kit is more than supplies. It is something that is theirs, helping them feel prepared, proud, and supported.

**Corporate teams can support this work by assembling curated kits or organizing supply drives that place these tools directly into the hands of young people.**

---

## OPTION 1: CREATIVITY KIT PACKING

**Thrive sources the materials; your team assembles the kits.**

- Pack curated wellness and school supply kits
- Participate in a structured, ready-to-run team experience

Ideal for organizations seeking a streamlined, high-impact engagement activity.

## OPTION 2: SUPPLY DRIVES

**Your organization collects the supplies; Thrive provides guidance and packaging.**

- Run drives using curated templates and supply lists
- Engage employees across departments or locations

Ideal for organizations seeking broad participation and sustained engagement.

---

## WHY CHOOSE CREATIVITY KITS

**Support Local Children:** Equip youth in your community with essential supplies that remove barriers to participation.

**Team Building:** A collaborative, purpose-driven activity suitable for teams of any size.

**Social Responsibility:** Tangible community investment aligned with equity and access.

**Branding Opportunity:** Each kit includes acknowledgment of your company’s contribution.



# Team-Building Workshops

## CREATIVITY-DRIVEN LEARNING FOR CORPORATE TEAMS

Thrive’s team-building workshops are facilitated, creativity-based experiences designed for corporate teams and leadership groups. Inspired by Thrive’s youth programs, these workshops use creative practice as a tool for collaboration, empathy, communication, and reflection.

Workshops are led by professional artist-educators and adapted for adult learners, offering teams a meaningful shared experience that connects creativity with leadership and workplace culture.

Experiences can take place on-site in-person or online across multiple locations.



## HOW WORKSHOPS WORK

Thrive’s team-building workshops are highly customizable and can be delivered as:

- Team retreats and off-sites
- Leadership development sessions
- Employee engagement or wellness initiatives

They can be offered as:

- A standalone engagement opportunity
- An add-on for existing Thrive partners
- A complement to volunteering or philanthropic investment

Thrive’s workshops bring the same creativity and care we offer young people into corporate spaces, creating meaningful experiences that strengthen teams.

---

# Let's Build the Right Partnership Together

Every organization engages differently. Whether your priority is youth impact, employee engagement, brand visibility, or long-term community investment, Thrive works with you to design a partnership that is aligned, meaningful, and sustainable.

We welcome the opportunity to explore what collaboration could look like for your organization.

## Next steps

Let's book a 30-minute call. Share your organization's goals, and we'll propose two to three partnership pathways that align with your priorities and capacity.

## Pari Rajagopalan

President & CEO

Thrive Youth Development Canada

[prajagopalan@thriveyouth.ca](mailto:prajagopalan@thriveyouth.ca)

[thriveyouth.ca](http://thriveyouth.ca)

